

COOL CREATIONS

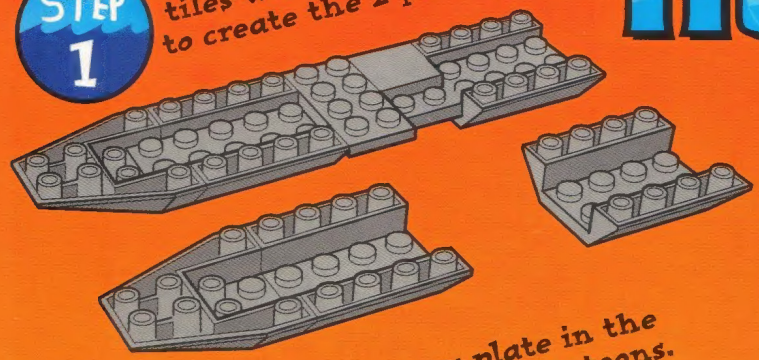
You asked for building instructions for alternate models shown on the boxes of your favorite sets. Now here's your chance to build this sleek Hovercraft using pieces from #6544 Shuttle Transcon 2 or pieces from your own collection!



HOVERCRAFT

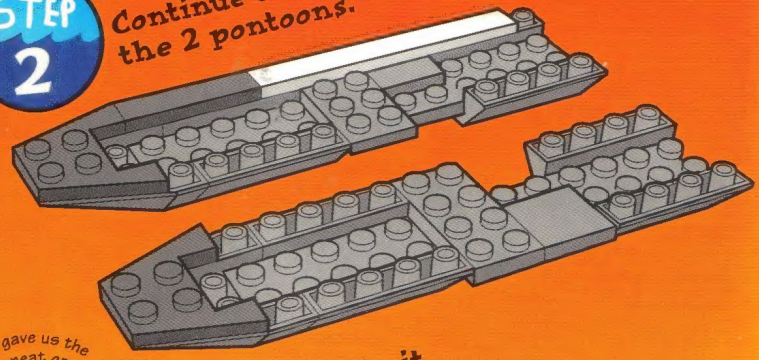
STEP 1

Connect the large gray roof tiles with 12x2 gray plates to create the 2 pontoons.



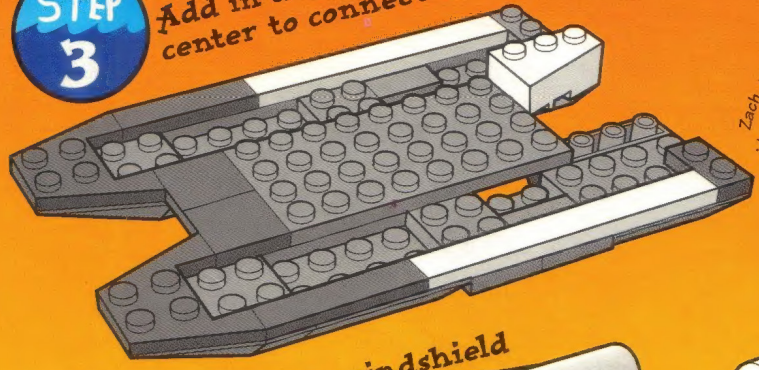
STEP 2

Continue constructing the 2 pontoons.



STEP 3

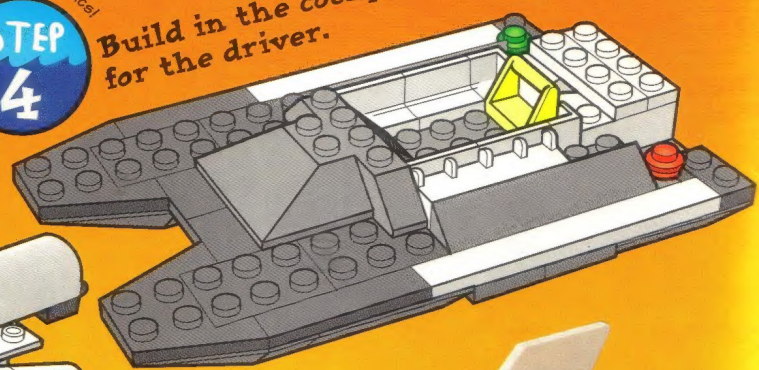
Add in a 4 x 8 gray plate in the center to connect the 2 pontoons.



Zach Johnson gave us the idea for these neat graphics!

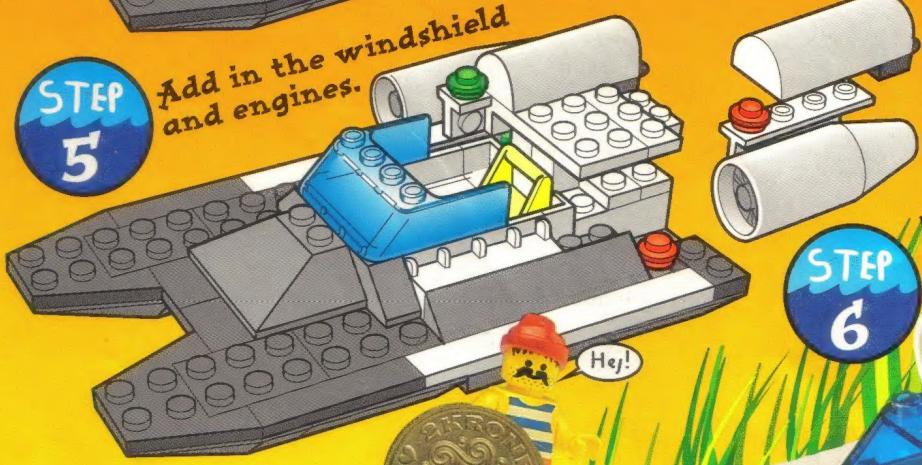
STEP 4

Build in the cockpit for the driver.



STEP 5

Add in the windshield and engines.



STEP 6

Zoom off in your new hovercraft!



Firefighter figure is included in #6614

Your design could be featured in Cool Creations. Send in your original model-making instructions to:
LEGO Club, "Cool Creations"
 P.O. Box 1308, Enfield, CT 06083.
 Club members featured will receive a free LEGO set of their choice (\$100 value)!

